

Perfect Music · Eternal Pursuit

Rebec
CAR AUDIO
Stereobutikken AS

Aursundveien 2806 7370 Brekkebygd Norway
TEL:+4722320860 WEB:<http://WWW.Rebecaudio.eu>

Rebec

Rebec Product sales manual Simplified
Version

▶ 2024-2025

Brand Profile

Rebec Founded in 2009, concept designed with the "Natural Voice, Music Reappearance": "excellent quality"; "Nature, Reality, Perfect Regeneration of Music" Incorporating special materials and exquisite craftsmanship into the product, and constantly innovating to create perfect sound. The Rebec technical team is meticulous and uncompromising in the design, development and innovation of each products, engraving the understanding of sound and the perception of life into the product, giving the product deeper musical connotation, more natural spirituality makes the sound system no longer an only device ,perfect combine technology and art! more touching sound of nature!

Rebec has been awarded the "HI-FI" Level audio brand by professional organizations, and has won the "Top Ten Auto Audio Brand", "Outstanding Independent Brand" and "Consumer Satisfaction Brand". The public's recognition is the biggest affirmation and support for rebec, and it is to inspire the rebec team to keep forward on the car audio market. Welcome to use the rebec products, It will bring you the realism of the live performance of the concert and journey of enjoying the music!



Brand History

2018 to 2025

Rebec road to the world

Excellent product performance and operation team. It has attracted agents from Asia Pacific and Europe.



2016

Intelligent products launch

The rebec intelligent products once again surprise everyone. The exquisite exterior and sufficient power is the best from rebec.



2017

Rebec new starting

Rebec integrates into a new operational team and internal team, Keep up with the world. builds internet & innovation car audio brand service.



2014

China car audio competition's

In the 2014 of the car audio competition. rebec audio cars win a champions and many award. Specially awarded, is the team in the AEA competition quarterfinals. Proof rebec Strength.



2015

Legend Series new product

At the request from the Rebec fans. Rebec launched 2 amplifiers of the Legend series. the quality was recognized once again.



2012

Rebec Legend Series

The product development is a brand foundation, Therefore Rebec always keep the sound and quality of the product in the First priority. The "Legend" series technological is using the rebec R&D team many years experience to develop.



2013

Rebec won a many awards

Rebec won a many awards. has proven to be rewarding with strength. from the consumer's recognition. this is the biggest support and encourage for rebec.



2010

Rebec subversive training

Three times technical trainings in China was car audio market attention. At the same time, more car audio enthusiasts favorite the Rebec sound quality.



2009

Rebec products line launch

The ultra-high performance is the best mark for the Rebec. obtain attention from the car audio market and Dealer. the fans of car audio can have a better choice.



2003

Baifu audio established

The establishment of baifu audio based on a dream with feelings - Make a good sound for car audio, The team Focus to research and development the products.



Brand Honor

Rebec has been awarded the Numerous awards by professional organizations, The public's recognition is the biggest affirmation Inspired the Rebec to go higher, and it is to inspire the Rebec team to keep forward on the car audio market. Every achievement we have made embodies the wisdom and dream of the Rebec team. Behind every glory is the accumulation and precipitation of the past.



2014 - 2015
Recommended brand award of the year
from Grand Prix Annual Billboard of China
Auto Aftermarket industry



2011 - 2018
Top 10 car audio band of the
www.carcav.com



2013 - 2017
Craftsman award of the
360qc.com



2010 - 2018
Year partner of the www.carcav.com



2015
Car audio Modified Masters Quarterfinals of the AEA
China (International)

2010: won the "Overflight Progress Award"
2013-2017: "Consumer Satisfaction Brand"
2011-2017: "Top 10 Car Audio Brands"
2014-2015: Successively awarded the "Annual Outstanding Independent Brand"
2012-2018: Won the car audio professional competition Champion, runner-up, third runner-up, etc
2013-2016: "HI-FI Fever Audio Brand"
2014: we successfully qualified for the "Top Eight" of AEA International competitions

Rebec
CAR AUDIO



ES2S

APPRECIATE ULTIMATE MUSIC

- Two channel AB class power amplifier
- Warm and delicate tone
- Ultra high analytical power
- Excellent balance



BORN FOR TOP-LEVEL SPEAKERS



Input Level:	0.63~11V	Bridged Power :	750W×1 (14.4V@4Ω)
Operating Voltage:	10~16V	S/N :	≥99dB
Frequency Response:	20Hz~35KHz	Distortion:	0.01%
Rated Power :	250W×2 (14.4V@4Ω) 500W×2 (14.4V@2Ω)	Dimensions:	421×240×63mm

International Vision

As an important brand of Chord audio, rebec has continuously improved its product line from the entry level to the Hi-End level, it can be provide to many car audio enthusiasts, enjoy the best music in the car.

Since the creation of Rebec, the founder of Rebec has decided to set up a Hi-End Enthusiast-Level car audio brand. For this reason, the rebec brand team has invested a lot of resources, time and spirit, actively cooperates of the project with china and international excellent engineer.

Rebec Integrate global quality resources, with the pursuit of perfect music and the persistence of quality, create a classic series of products.

Rebec, will let the world listen to your sound !



Legend Series Amplifier

ES2S Class AB 2-channel power amplifier



◎Voice performance: Majestic and vigorous, progressive, showing every detail in an orderly manner.

ES2S Technical Parameter

Working Mode:	AB	Bridged Power:	750W×1 (14.4V@4Ω)
Input Level:	0.63-11V	S/N:	≥99dB
Operating Voltage:	10-16V	Fuse:	25A×3
Frequency Response:	20Hz-35KHz	Dimensions:	421×240×63 mm
Rated Power :	250W×2 (14.4V@4Ω)		500W×2 (14.4V@2Ω)

◎ Sound performance: The timbre is exquisite and natural, rich and delicate, and stable in big dynamic situations.

ES4S Technical Parameter

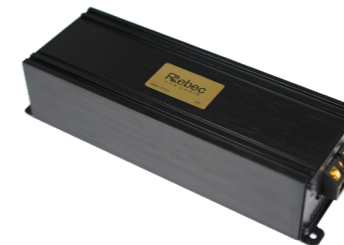
Working Mode:	AB	Bridged Power:	450W×2
Input Level:	0.63-11V	S/N:	≥99dB
Operating Voltage:	10-16V	Fuse:	25A×3
Frequency Response:	20Hz-35KHz	Dimensions:	421×240×63 mm
Rated Power :	150W×4 (14.4V@4Ω)		300W×4 (14.4V@2Ω)

ES4S Class AB 4-channel power amplifier



Classic series amplifier

CS1 Class AB 1-channel power amplifier



◎Sound performance: Excellent analytical power, perfect description of music details, stimulate the ultimate performance of the loudspeaker.

CS1 Technical Parameter

Working Mode:	AB	Bridged Power:	——
Input Level:	0.3-10V	S/N:	>97dB
Operating Voltage:	10-16V	Fuse:	25A×1
Frequency Response:	20Hz-20KHz	Dimensions:	245×81×56 mm
Rated Power :	100W×1ch		

◎Sound performance: 1200W high-power single channel bass amplifier, loose and elastic tone.

A1200D Technical Parameter

Working Mode:	D	S/N:	>95dB
Input Level:	0.3-6V	Fuse:	30A×4
Operating Voltage:	10-16V	Dimensions:	255×186×51mm
Frequency Response:	10Hz~150Hz/10Hz-1KHz		
Rated Power :	1×450W@4Ω		1×738W@2Ω 1×1200W@1Ω

A1200D Class D 1-channel power amplifier



A1800D Class D 1-channel power amplifier



◎Sound performance: 1800W high-power single channel bass amplifier, loose and elastic tone.

A1800D Technical Parameter

Working Mode:	AB	Frequency Response:	10Hz~180Hz/10Hz-1KHz
Input Level:	0.6-6V	S/N:	≥95dB
Operating Voltage:	10-16V	Dimensions:	337×186×51mm
Rated Power :	1×700W@4Ω		1×1100W@2Ω 1×1800W@1Ω

RE100V2 100W×4 Class AB 4-channel power amplifier



◎ Sound performance: Warm, mellow, thick, bright and energetic.

RE100V2 Technical Parameter

Working Mode:	AB	Bridged Power:	300W×2
Input Level:	0.6-10V	S/N:	≥105dB
Operating Voltage:	10-16V	Fuse:	25A×2
Frequency Response:	10Hz-45KHz	Dimensions:	310×168×50 mm
Rated Power :	100W×4ch		

RE120 120W×4 Class AB 4-channel power amplifier



◎ Sound performance: Warm, mellow, thick, bright and energetic.

RE120 Technical Parameter

Working Mode:	AB	Bridged Power:	460W×2
Input Level:	0.35-10V	S/N:	>98dB
Operating Voltage:	10-16V	Fuse:	25A×2
Frequency Response:	20Hz-35KHz	Dimensions:	368×220×56mm
Rated Power :	120W×4ch		

RE160 135W×2 Class AB 2-channel power amplifier



◎ Sound performance: Warm, mellow, thick, bright and energetic.

RE160 Technical Parameter

Working Mode:	AB	Bridged Power:	400W×1
Input Level:	0.6-10V	S/N:	≥105dB
Operating Voltage:	10-16V	Fuse:	25A×2
Frequency Response:	10Hz-45KHz	Dimensions:	310×168×50 mm
Rated Power :	135W×2ch		

D600 600W×1 Class D 1- channel power amplifier



◎ Sound performance: Feel the beauty of low frequency, have sufficient energy, dive deep, and have good dynamic effect.

D600 Technical Parameter

Working Mode:	D	Rated Power :	1×285W@4Ω
Input Level:	0.3-6V		1×480W@2Ω
Operating Voltage:	10-16V		1×600W@1Ω
Frequency Response:	20Hz-150Hz	Dimensions :	185×130×45 mm
S/N:	>95dB		

D1200 1200W×1 Class D 1- channel power amplifier



◎ Sound performance: Feel the beauty of low frequency, have sufficient energy, dive deep, and have good dynamic effect.

D1200 Technical Parameter

Working Mode:	D	Rated Power :	1×500W@4Ω
Input Level:	0.3-6V		1×800W@2Ω
Operating Voltage:	10-16V		1×1200W@1Ω
Frequency Response:	20Hz-150Hz	Dimensions :	240×130×45 mm
S/N:	>95dB		

RA200 200W×2 Class AB 2-channel power amplifier



◎ Sound performance:Sufficient power, strong resolution, good imaging effect, and exquisite and true timbre.

RA200 Technical Parameter

Working Mode:	AB	Bridged Power:	600W×1
Input Level:	0.35-10V	S/N:	>105dB
Operating Voltage:	10-16V	Fuse:	25A×4
Frequency Response:	20Hz-22KHz	Dimensions:	369×220×52 mm
Rated Power :	200W×2ch		

◎Sound performance: High resolution, accuratetuning by computer, perfect regeneration of music.

A6150 Technical Parameter

Working Mode:	AB	Bridged Power :	450W×1 (14.4V@4Ω)
Input Level:	0.6~10V	S/N :	≥98dB
Operating Voltage:	10~16V	Fuse:	25A×3
Frequency Response:	20Hz~35KHz	Dimensions:	365×198×51mm
Rated Power :	100W×4 + 150W×2		(14.4V@4Ω)

A6150 100Wx4+150W×2 Class AB 6-channel power amplifier



◎Sound performance: High resolution, accuratetuning by computer, perfect regeneration of music.

DSP-A8S Technical Parameter

Working Mode:	AB	Bridged Power:	210W×1(CH5+,CH6+)
Input Level:	High level:30Vpp, RCA:8Vpp	S/N:	>101dB
Operating Voltage:	10-16V	Fuse:	25A×2
Frequency Response:	20Hz-20KHz	Dimensions:	337x193x52 mm
Rated Power :	70Wx6ch		
DSP channels:	6-ch input 8-ch output		

DSP-A8S 70Wx6 Class AB 6-channel power amplifier (matching control panel)



◎Sound performance: High resolution, accuratetuning by computer, perfect regeneration of music.

DSP-A12S Technical Parameter

Working Mode:	AB(Class)	Bridged Power :	450W×2
Input Level:	ACC:30Vpp; RCA:8VPP	S/N :	>105dB
Operating Voltage:	10~16V	Fuse:	30A×3
Frequency Response:	10Hz~22KHz	Dimensions:	365×198×51mm
Rated Power :	80W×4 150W×4 (14.4V@4Ω)		
DSP channels:	12-ch input 12-ch output		

DSP-A12S 80W×4+150W×4 Class AB 8-channel power amplifier



©Sound performance: High resolution, accuratetuning by computer, perfect regeneration of music.

RPX-B480V2 Technical Parameter

Working Mode:	AB(Class)	Bridged Power :	---
Input Level:	ACC:26Vpp; RCA:6Vpp	S/N :	>105dB
Operating Voltage:	10~16V	Fuse:	---
Frequency Response:	20Hz~20KHz	Dimensions:	167×117×47mm
Maximum Power :	60Wx4 (14.4V@4Ω)		
DSP channels:	4-ch input 8-ch output		

RPX-B480V2 60W×4 Class AB 4-channel power amplifier



©Sound performance: High resolution, accuratetuning by computer, perfect regeneration of music.

RPX-B680V2 Technical Parameter

Working Mode:	AB(Class)	Bridged Power :	---
Input Level:	ACC:26Vpp; RCA:6Vpp	S/N :	>105dB
Operating Voltage:	10~16V	Fuse:	---
Frequency Response:	20Hz~20KHz	Dimensions:	167×117×47mm
Maximum Power :	60Wx4+50Wx2 (14.4V@4Ω)		
DSP channels:	4-ch input 8-ch output		

RPX-B680V2 60W×4+50W×2 Class AB 6-channel power amplifier



©Sound performance: 31bands EQ adjustable sound, perfect regeneration of music.

RPX-B1260 Technical Parameter

Working Mode:	AB	Maximum Power:	60Wx12@4Ω
Input Level:	High level: 28VPP; RCA: 6VPP	Bridged Power :	---
		S/N :	>95dB
Operating Voltage:	10~16V	Fuse:	---
Frequency Response:	20Hz~20KHz	Dimensions:	208x197x50mm
DSP channels:	12-ch input 12-ch output		

RPX-B1260 60Wx12 Class AB 12-channel power amplifier (matching control panel)



©Sound performance: 31bands EQ adjustable sound, perfect regeneration of music.

RPX-B812 Technical Parameter

Working Mode:	D	Maximum Power:	100W×8 (@4Ω)
Input Level:	High level: 28Vpp; RCA: 6VPP	Bridged Power :	---
		S/N :	>94dB
Operating Voltage:	10~16V	Fuse:	---
Frequency Response:	20Hz~20KHz	Dimensions:	208×197×50mm
DSP channels:	12-ch input 12-ch output		

RPX-B812 100Wx8 Class D 8-channel power amplifier (matching control panel)

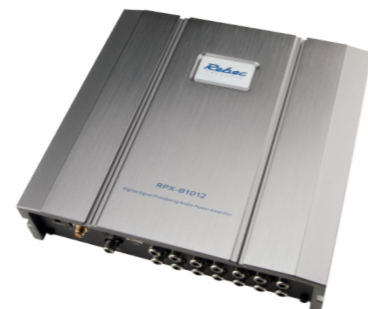


©Sound performance: 31bands EQ adjustable sound, perfect regeneration of music.

RPX-B1012 Technical Parameter

Working Mode:	D	Maximum Power:	100W×10 (@4Ω)
Input Level:	High level: 28Vpp; RCA: 6VPP	Bridged Power :	---
		S/N :	>94dB
Operating Voltage:	10~16V	Fuse:	---
Frequency Response:	20Hz~20KHz	Dimensions:	208×197×50mm
DSP channels:	12-ch input 12-ch output		

RPX-B1012 100Wx10 Class D 10-channel power amplifier (matching control panel)



©Sound performance: 31bands EQ adjustable sound, perfect regeneration of music.

RPX-B12SV2 Technical Parameter

Working Mode:	D	Maximum Power :	8×100W+4×200W
Input Level:	High level:28Vpp, RCA:6Vpp	Bridged Power:	400W×2
		S/N:	>95dB
Operating Voltage:	10-16V	Fuse:	30A×2
Frequency Response:	20Hz-22KHz	Dimensions:	271×228×53mm
DSP channels:	12-ch input 12-ch output		

RPX-B12SV2 8*60W+4*100W 12-channel power amplifier (matching control panel)



©Sound performance: 31bands EQ adjustable sound, perfect regeneration of music.

RPX-B12S Technical Parameter

Working Mode:	D	Maximum Power :	200Wx12ch
Input Level:	High level:30Vpp, RCA:6Vpp	Bridged Power:	400W×6
		S/N:	>101dB
Operating Voltage:	10-16V	Fuse:	30A×4
Frequency Response:	10Hz-22KHz	Dimensions:	258×228×53mm
DSP channels:	12-ch input 12-ch output		

RPX-B12S 100Wx12 Class D 12-channel power amplifier (matching control panel)

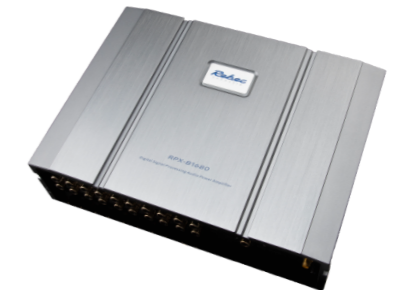


©Sound performance: 31bands EQ adjustable sound, perfect regeneration of music.

RPX-B1680 Technical Parameter

Working Mode:	D	Maximum Power :	100Wx16
Input Level:	High level:28Vpp, RCA:6Vpp	S/N:	≥95dB
		Fuse:	30A×2
Operating Voltage:	10-16V	Dimensions:	263×192×51mm
Frequency Response:	20Hz-20KHz		
DSP channels:	16-ch input 18-ch output		

RPX-B1680 100Wx16 Class D 16-channel power amplifier (matching control panel)

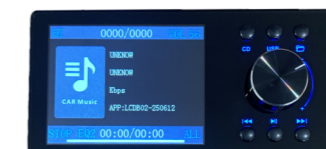


DRC1



DRC1:
(for B480V2/B680V2/B1260/B812/B1012/B12SV2/B1680)

DRC08



DRC08: for USB music playback
(for B480V2/B680V2/B1260/B812/B1012/B12SV2/B1680)



LS92 Grey Tweeter

Impedance:	4ohm	Frequency Response:	780Hz~29KHz
Rated Power :	30W	Voice Coil Diaeter:	28mm/1.10"
Maximum Power:	180W	Inst.depth:	26mm/1.02"
Sensitivity:	91.590dB	Tweeter Size:	92mm/3.62"



LS92 Black Tweeter

Impedance:	4ohm	Frequency Response:	780Hz~29KHz
Rated Power :	30W	Voice Coil Diaeter:	28mm/1.10"
Maximum Power:	180W	Inst.depth:	26mm/1.02"
Sensitivity:	91.590dB	Tweeter Size:	92mm/3.62"



LS92 Se Tweeter

Impedance:	4ohm	Frequency Response:	780Hz~29KHz
Rated Power :	30W	Voice Coil Diaeter:	28mm/1.10"
Maximum Power:	180W	Inst.depth:	26mm/1.02"
Sensitivity:	91.590dB	Tweeter Size:	92mm/3.62"



LS92 Grey Tweeter

Impedance:	4ohm	Frequency Response:	780Hz~29KHz
Rated Power :	30W	Voice Coil Diaeter:	28mm/1.10"
Maximum Power:	180W	Inst.depth:	26mm/1.02"
Sensitivity:	91.590dB	Tweeter Size:	92mm/3.62"



LS 104 Grey Mid-range speakers

Impedance:	4ohm	Frequency Response:	100Hz~8.5KHz
Rated Power :	40W	Voice Coil Diaeter:	30mm/1.18"
Maximum Power:	80W	Inst.depth:	48mm/1.89"
Sensitivity:	86.570dB	Midrange Size:	104mm/4.09"



LS 104 Black Mid-range speakers

Impedance:	4ohm	Frequency Response:	100Hz~8.5KHz
Rated Power :	40W	Voice Coil Diaeter:	30mm/1.18"
Maximum Power:	80W	Inst.depth:	48mm/1.89"
Sensitivity:	86.570dB	Midrange Size:	104mm/4.09"



LS 165 Grey Bass Speaker (grill optional)

Impedance:	4ohm	Frequency Response:	65Hz~6KHz
Rated Power :	80W	Voice Coil Diaeter:	42mm/1.64"
Maximum Power:	160W	Woofer Size:	165mm/6.5"
Sensitivity:	87.609dB	Inst.depth:	69mm/2.72"



LS 165 Black Bass Speaker (grill optional)

Impedance:	4ohm	Frequency Response:	65Hz~6KHz
Rated Power :	80W	Voice Coil Diaeter:	42mm/1.64"
Maximum Power:	160W	Woofer Size:	165mm/6.5"
Sensitivity:	87.609dB	Inst.depth:	69mm/2.72"



LS 200W Black Bass Speaker (grill optional)

Impedance:	4ohm	Frequency Response:	40Hz~4KHz
Rated Power :	90W	Voice Coil Diaeter:	42mm/1.65"
Maximum Power:	180W	Inst.depth:	68.5mm/2.7"
Sensitivity:	86dB	Woofer Size:	209mm/8"



LS 200W Grey Bass Speaker (grill optional)

Impedance:	4ohm	Frequency Response:	40Hz~4KHz
Rated Power :	90W	Voice Coil Diaeter:	42mm/1.65"
Maximum Power:	180W	Inst.depth:	68.5mm/2.7"
Sensitivity:	86dB	Woofer Size:	209mm/8"



© Sound performance: Excellent vocal image, vivid music performance, low-frequency diving full of bouncing.

ES6.3 Technical Parameter

Technical Parameter:	ES28	ES104	ES165
Impedance:	4ohm	4ohm	4ohm
Rated Power:	25w	40w	75w
Maximum Power:	150w	80w	150w
Frequency Response:	1.37KHz-27.2KHz	100Hz-8.5KHz	55Hz-6KHz
Voice Coil Diameter:	28mm/1.10in	30mm/1.18in	30mm/1.18in
Sensitivity:	89.93dB	86.570dB	85.398dB



© Sound performance: Excellent vocal image, vivid music performance, low-frequency diving full of bouncing.

LS 6.3 Grey channel frequency division set speaker

Impedance:	4ohm	Frequency Response:	65Hz~29KHz
Rated Power :	80W	Tweeter Size:	92mm/3.62"
Maximum Power:	160W	Midrange Size:	104mm/4.09"
Sensitivity:	87.61dB	Woofer Size:	165mm/6.5"



© Sound performance: Excellent vocal image, vivid music performance, low-frequency diving full of bouncing.

LS 6.3 Black channel frequency division set speaker

Impedance:	4ohm	Frequency Response:	65Hz~29KHz
Rated Power :	80W	Tweeter Size:	92mm/3.62"
Maximum Power:	160W	Midrange Size:	104mm/4.09"
Sensitivity:	87.61dB	Woofer Size:	165mm/6.5"



© Sound performance: Excellent vocal image, vivid music performance, low-frequency diving full of bouncing.

LS 6.3 SE channel frequency division set speaker

Impedance:	4ohm	Frequency Response:	65Hz~29KHz
Rated Power :	80W	Tweeter Size:	92mm/3.62"
Maximum Power:	160W	Midrange Size:	104mm/4.09"
Sensitivity:	87.61dB	Woofer Size:	165mm/6.5"



© Sound performance: Excellent vocal image, vivid music performance, low-frequency diving full of bouncing.

LS 6.3 SE Silver channel frequency division set speaker

Impedance:	4ohm	Frequency Response:	65Hz~29KHz
Rated Power :	80W	Tweeter Size:	92mm/3.62"
Maximum Power:	160W	Midrange Size:	104mm/4.09"
Sensitivity:	87.61dB	Woofer Size:	165mm/6.5"



© Sound performance: Excellent vocal image, vivid music performance, low-frequency diving full of bouncing.

LS 8.3 Black channel frequency division set speaker

Impedance:	4ohm	Frequency Response:	40Hz~29KHz
Rated Power :	90W	Tweeter Size:	92mm/3.62"
Maximum Power:	180W	Midrange Size:	104mm/4.09"
Sensitivity:	86dB	Woofer Size:	209mm/8"



© Sound performance: Excellent vocal image, vivid music performance, low-frequency diving full of bouncing.

LS 8.3 Silver channel frequency division set speaker

Impedance:	4ohm	Frequency Response:	40Hz~29KHz
Rated Power :	90W	Tweeter Size:	92mm/3.62"
Maximum Power:	180W	Midrange Size:	104mm/4.09"
Sensitivity:	86dB	Woofer Size:	209mm/8"



© Sound performance: Excellent vocal image, vivid music performance, low-frequency diving full of bouncing.

LS 8.3 SE Black channel frequency division set speaker

Impedance:	4ohm	Frequency Response:	40Hz~29KHz
Rated Power :	90W	Tweeter Size:	92mm/3.62"
Maximum Power:	180W	Midrange Size:	104mm/4.09"
Sensitivity:	86dB	Woofer Size:	209mm/8"



© Sound performance: Excellent vocal image, vivid music performance, low-frequency diving full of bouncing.

LS 8.3 SE Silver channel frequency division set speaker

Impedance:	4ohm	Frequency Response:	40Hz~29KHz
Rated Power :	90W	Tweeter Size:	92mm/3.62"
Maximum Power:	180W	Midrange Size:	104mm/4.09"
Sensitivity:	86dB	Woofer Size:	209mm/8"



RX25 Tweeter

Impedance :	4ohm	Frequency Response:	1KHz~22KHz
Rated Power :	15W	Voice Coil Diaeter:	25mm/0.98"
Maximum Power:	30W	Inst.depth:	14mm/0.55"
Sensitivity:	88dB	Tweeter Size:	53mm/2.08"



RX2 Technical Parameter

Impedance:	4ohm	Frequency Response:	100Hz-22KHz
Rated Power :	25W	Voice Coil Diaeter:	20mm/0.79"
Maxmum Power:	50W	Midrange Voice Coil Diaeter:	20mm/0.79"
Sensitivity:	88dB	Inst.depth:	49mm/1.93"



RX3 Technical Parameter

Impedance:	4ohm	Frequency Response:	85Hz-22KHz
Rated Power :	30W	Tweeter Voice Coil Diaeter:	20mm/0.79"
Maxmum Power:	60W	Midrange Voice Coil Diaeter:	30mm/1.18"
Sensitivity:	90dB	Inst.depth:	40mm/1.58"



RX165 Technical Parameter

Impedance:	4ohm	Frequency Response:	50Hz~8KHz
Rated Power :	65W	Voice Coil Diaeter:	25mm/0.98"
Maximum Power:	130W	Woofer Size:	165mm/6.5"
Sensitivity:	86.1dB	Inst.depth:	70mm/2.76"

RV28 Tweeter



Impedance :	4ohm	Frequency Response:	1KHz~27KHz
Rated Power :	20W	Voice Coil Diaeter:	28mm/1.10"
Maximum Power:	40W	Inst.depth:	19mm/0.75"
Sensitivity:	89dB	Tweeter Size:	60mm/2.36"



RV92 Mid-range speakers

Impedance :	4ohm	Frequency Response:	90Hz~7KHz
Rated Power :	35W	Midrange Voice Coil Diaeter:	25mm/0.98"
Maximum Power:	70W	Inst.depth:	42mm/1.65"
Sensitivity:	88.69dB		



RV165 Bass Speaker

Impedance	4ohm	Frequency Response:	42Hz~7KHz
Rated Power :	65W	Voice Coil Diaeter:	25mm/0.98"
Maximum Power:	130W	Inst.depth:	70mm/2.75"
Sensitivity:	86dB	Woofer Size:	165mm/6.5"



© Sound Performance: Appreciating the original sound quality.

RX6A Technical Parameter

Impedance	4ohm	Frequency Response:	50Hz~20KHz
Rated Power :	65W	Tweeter Voice Coil Diaeter:	25mm/0.98"
Maximum Power:	130W	Woofer Size:	165mm/6.5"
Sensitivity:	86dB	Inst.depth:	70mm/2.76"



© Sound Performance: Appreciating the original sound quality.

RX6P Technical Parameter

Impedance	4ohm	Frequency Response:	50Hz~20KHz
Rated Power :	65W	Tweeter Voice Coil Diaeter:	25mm/0.98"
Maximum Power:	130W	Woofer Size:	165mm/6.5"
Sensitivity:	86dB	Inst.depth:	70mm/2.76"



© Sound performance: Transparent and natural, uncompressed, low distortion.

RX2+RX165 Technical Parameter

Impedance	4ohm	Frequency Response:	50Hz~22KHz
Rated Power :	65W	Tweeter Voice Coil Diaeter:	20mm/0.79"
Maximum Power:	130W	Woofer Size:	165mm/6.5"
Sensitivity:	86.1dB	Inst.depth:	70mm/2.76"



© Sound performance: Transparent and natural, uncompressed, low distortion.

RX3+RX165 Technical Parameter

Impedance	4ohm	Frequency Response:	50Hz~22KHz
Rated Power :	65W	Tweeter Voice Coil Diaeter:	20mm/0.79"
Maximum Power:	130W	Woofer Size:	165mm/6.5"
Sensitivity:	86.1dB	Inst.depth:	70mm/2.76"



© Sound performance: Excellent balance characteristics, quiet music background, sweet and clear voice performance.

RV6S Technical Parameter

Impedance	4ohm	Frequency Response:	42KHz~20KHz
Rated Power :	66W	Tweeter Voice Coil Diaeter:	28mm/1.1"
Maximum Power:	132W	Woofer Size:	165mm/6.5"
Sensitivity:	84dB	Inst.depth:	70mm/2.76"



© Sound performance: Excellent balance characteristics, quiet music background, sweet and clear voice performance.

RV6S.3 Technical Parameter

Impedance:	4ohm	Frequency Response:	42Hz~20KHz
Rated Power :	66W	Tweeter Size:	60mm/2.36"
Maximum Power:	132W	Midrange Size:	92mm/3.62"
Sensitivity:	84dB	Woofer Size:	165mm/6.5"



RS 28 Tweeter

Impedance:	4ohm	Frequency Response:	1KHz~30KHz
Rated Power :	25W	Voice Coil Diaeter:	28mm/1.10"
Maximum Power:	50W	Inst.depth:	17mm/0.669"
Sensitivity:	90dB	Tweeter Size:	62mm/2.4"



RS 28N Tweeter

Impedance:	4ohm	Frequency Response:	1KHz~30KHz
Rated Power :	25W	Voice Coil Diaeter:	28mm/1.10"
Maximum Power:	50W	Inst.depth:	16mm/0.63"
Sensitivity:	90dB	Tweeter Size:	42mm/1.65"



RS 90 Mid-range speakers

Impedance:	4ohm	Frequency Response:	80Hz~6KHz
Rated Power :	35W	Voice Coil Diaeter:	25mm/0.98"
Maximum Power:	70W	Inst.depth:	42mm/1.65"
Sensitivity:	86dB	Midrange Size:	92mm/3.62"



RS 104 Mid-range speakers

Impedance:	4ohm	Frequency Response:	100Hz~8.5KHz
Rated Power :	40W	Voice Coil Diaeter:	30mm/1.18"
Maximum Power:	80W	Inst.depth:	48mm/1.89"
Sensitivity:	86.570dB	Midrange Size:	104mm/4.09"



RS 165 Bass Speaker (grill optional)

Impedance:	4ohm	Frequency Response:	55Hz~8KHz
Rated Power :	70W	Voice Coil Diaeter:	30mm/1.18"
Maximum Power:	140W	Woofer Size:	165mm/6.5"
Sensitivity:	87dB	Inst.depth:	66mm/2.6"



RS 200 Bass Speaker (grill optional)

Impedance:	3ohm	Frequency Response:	40Hz~6KHz
Rated Power :	80W	Voice Coil Diaeter:	30mm/1.18"
Maximum Power:	160W	Woofer Size:	209mm/8"
Sensitivity:	90dB	Inst.depth:	68.5mm/2.7"



© Sound performance: Excellent vocal image, vivid music performance, low-frequency diving full of bouncing.

RS 6.3 channel frequency division set speaker

Impedance	4ohm	Frequency Response:	55Hz~30KHz
Rated Power :	70W	Woofer Size:	165mm/6.5"
Maximum Power:	140W	Tweeter Size:	61mm/2.4"
Sensitivity:	87dB	Midrange Size:	92mm/3.62"



© Sound performance: Excellent vocal image, vivid music performance, low-frequency diving full of bouncing.

RS6.3PRO 3 channel frequency division set speaker

Impedance	4ohm	Frequency Response:	55Hz~30KHz
Rated Power :	70W	Woofer Size:	165mm/6.5"
Maximum Power:	140W	Tweeter Size:	61mm/2.4"
Sensitivity:	87dB	Midrange Size:	104mm/4.09"



© Sound performance: Excellent vocal image, vivid music performance, low-frequency diving full of bouncing.

RS8.3 3 channel frequency division set speaker

Impedance	3ohm	Frequency Response:	40Hz~30KHz
Rated Power :	80W	Woofer Size:	209mm/8"
Maximum Power:	160W	Tweeter Size:	61mm/2.4"
Sensitivity:	90dB	Midrange Size:	92mm/3.62"



© Sound performance: Excellent vocal image, vivid music performance, low-frequency diving full of bouncing.

RS8.3PRO 3 channel frequency division set speaker

Impedance	3ohm	Frequency Response:	40Hz~30KHz
Rated Power :	80W	Woofer Size:	209mm/8"
Maximum Power:	160W	Tweeter Size:	61mm/2.4"
Sensitivity:	90dB	Midrange Size:	104mm/4.09"

RT6



© Sound performance: Full timbre, open sound field, cost-effective entry-level first choice

RT6 Technical Parameter

Impedance	3ohm	Frequency Response:	61Hz~20KHz
Rated Power :	55W	Tweeter Voice Coil Diaeter:	20mm/0.79"
Maxmum Power:	110W	Woofer Size:	165mm/6.5"
Sensitivity:	91dB	Inst.depth:	59mm/2.32"

RCX6A



©Sound performance: Clear and delicate tone, smooth transition, perfect complement to the back sound field.

RCX6A Technical Parameter

Impedance:	4ohm	Frequency Response:	66Hz~20KHz
Rated Power :	55W	Tweeter Voice Coil Diaeter:	13mm/0.52"
Maxmum Power:	110W	Woofer Size:	165mm/6.5"
Sensitivity:	93dB	Inst.depth:	64mm/2.52"

RCX6B



©Sound performance: Warm and natural tone, perfect complement to the back sound field.

RCX6B Technical Parameter

Impedance:	4ohm	Frequency Response:	58Hz~20KHz
Rated Power :	60W	Tweeter Voice Coil Diaeter:	25mm/0.98"
Maxmum Power:	120W	Woofer Size:	165mm/6.5"
Sensitivity:	92dB	Inst.depth:	65mm/2.56"

© Sound performance: Ultra wide frequency response characteristics, transparent, clear, and charming.

RL70 Technical Parameter

Impedance:	4ohm	Frequency Response:	130Hz~20KHz
Rated Power :	25W	Midrange Voice Coil Diaeter:	20mm/0.79"
Maxmum Power:	50W	Inst.depth:	33.5mm/1.32"
Sensitivity:	85.54dB		

© Sound performance: Immersive sound experience. Dynamic 4D panoramic sound

SA70 Technical Parameter

Impedance:	4ohm	Frequency Response:	160Hz~20KHz
Rated Power :	25W	Dimensions:	20mm/0.79"
Maxmum Power:	50W	Size:	69*71*83mm
Sensitivity:	89dB		

© Sound performance: Immersive sound experience. Dynamic 4D panoramic sound

SC-70 Technical Parameter

Impedance:	4ohm	Frequency Response:	600Hz~20KHz
Rated Power :	25W	Size:	70*70*29.6mm
Maxmum Power:	35W		

© Sound performance: The sound is highly three-dimensional, providing an immersive music experience

BL-80 Technical Parameter

Impedance:	4ohm	Sensitivity:	89dB
Rated Power :	15W	Frequency Response:	250Hz~15KHz
Maxmum Power:	30W		

RL70 2.5" Full frequency mid range speaker



SA70 Square center speaker



SC-70 2.75" Sky channel speaker



BL-80 3" Super center speaker



BMW28



© Sound performance: Full timbre, open sound field, cost-effective entry-level first choice

BMW28 Technical Parameter

Impedance	4ohm	Frequency Response:	1.2KHz~25KHz
Rated Power :	20W	Voice Coil Diaeter:	25mm/0.98"
Maximum Power:	40W	Inst.depth:	8mm/0.31"
Sensitivity:	91dB	Tweeter Size:	43mm/1.69"

BMW100



© Sound performance: Full timbre, open sound field, cost-effective entry-level first choice

BMW100 Technical Parameter

Impedance	4ohm	Frequency Response:	70Hz~6KHz
Rated Power :	40W	Voice Coil Diaeter:	25mm/0.98"
Maximum Power:	80W	Inst.depth:	42.5mm/1.67"
Sensitivity:	86dB	Midrange Size:	114mm/4.5"

BMW120



© Sound performance: Full timbre, open sound field, cost-effective entry-level first choice

BMW120 Technical Parameter

Impedance	4ohm	Frequency Response:	70Hz~6KHz
Rated Power :	40W	Voice Coil Diaeter:	25mm/0.98"
Maximum Power:	80W	Inst.depth:	32mm/1.25"
Sensitivity:	86dB	Midrange Size:	129mm/5"

BMW200



© Sound performance: Full timbre, open sound field, cost-effective entry-level first choice

BMW200 Technical Parameter

Impedance	2ohm	Frequency Response:	20Hz~1KHz
Rated Power :	150W	Voice Coil Diaeter:	50mm/1.97"
Maximum Power:	200W	Inst.depth:	57mm/2.24"
Sensitivity:	89dB	Woofer Size:	239*228mm/8"



© Sound performance: Excellent balance characteristics, quiet music background, sweet and clear voice performance.

BMW Technical Parameter

Impedance:	2ohm	Frequency Response:	20Hz~25KHz
Rated Power :	150W	Tweeter Size:	43mm/1.7"
Maximum Power:	200W	Midrange Size:	114mm/4.5"
Sensitivity:	89dB	Woofer Size:	200mm/8"



© Sound performance: Excellent balance characteristics, quiet music background, sweet and clear voice performance.

BMW Technical Parameter

Impedance:	2ohm	Frequency Response:	20Hz~25KHz
Rated Power :	150W	Tweeter Size:	43mm/1.7"
Maximum Power:	200W	Midrange Size:	129mm/5"
Sensitivity:	89dB	Woofer Size:	200mm/8"



RC25 Tweeter

Impedance :	4ohm	Frequency Response:	1KHz~22KHz
Rated Power :	15W	Voice Coil Diaeter:	25mm/0.98"
Maximum Power:	30W	Inst.depth:	14.5mm/0.57"
Sensitivity:	88dB	Tweeter Size:	55.5mm/2.18"



RC28 Tweeter

Impedance:	4ohm	Frequency Response:	1KHz~27KHz
Rated Power :	20W	Voice Coil Diaeter:	28mm/1.10"
Maxmum Power:	40W	Midrange Voice Coil Diaeter:	19mm/0.75"
Sensitivity:	89dB	Inst.depth:	60mm/2.36"



RC90 Technical Parameter

Impedance:	4ohm	Frequency Response:	75Hz~6KHz
Rated Power :	30W	Midrange Voice Coil Diaeter:	20mm/0.79"
Maxmum Power:	60W	Inst.depth:	39mm/1.54"
Sensitivity:	87dB		



RC165 Technical Parameter

Impedance:	4ohm	Frequency Response:	50Hz~5.5KHz
Rated Power :	60W	Voice Coil Diaeter:	25mm/0.98"
Maximum Power:	130W	Inst.depth:	70mm/2.75"
Sensitivity:	89dB	Woofer Size:	165mm/6.5"



RC200 Technical Parameter

Impedance:	4ohm	Frequency Response:	45Hz~3KHz
Rated Power :	75W	Voice Coil Diaeter:	30mm/1.18"
Maximum Power:	150W	Woofer Size:	209mm/8"
Sensitivity:	88.769dB	Inst.depth:	64mm/2.52"

RC6A



© Sound performance: Excellent vocal image, vivid music performance, low-frequency diving full of bouncing.

RC6A Technical Parameter

Impedance	4ohm	Frequency Response:	50Hz~22KHz
Rated Power :	65W	Tweeter Voice Coil Diaeter:	25mm/0.98"
Maxmum Power:	130W	Woofer Size:	165mm/6.5"
Sensitivity:	89dB	Inst.depth:	70mm/2.76"

RC8A



© Sound performance: Excellent vocal image, vivid music performance, low-frequency diving full of bouncing.

RC8A Technical Parameter

Impedance:	4ohm	Frequency Response:	45Hz~20KHz
Rated Power :	75W	Voice Coil Diaeter:	28mm/1.1"
Maximum Power:	150W	Woofer Size:	209mm/8"
Sensitivity:	88.769dB	Inst.depth:	64mm/2.52"

RC6.3



© Sound performance: Excellent vocal image, vivid music performance, low-frequency diving full of bouncing.

RC6.3 Technical Parameter

Impedance:	4ohm	Frequency Response:	50Hz~22KHz
Rated Power :	65W	Tweeter Size:	55.5mm/2.18"
Maximum Power:	130W	Midrange Size:	92mm/3.62"
Sensitivity:	89dB	Woofer Size:	165mm/6.5"

RC8.3



© Sound performance: Excellent vocal image, vivid music performance, low-frequency diving full of bouncing.

RC8.3 Technical Parameter

Impedance:	4ohm	Frequency Response:	40Hz~27KHz
Rated Power :	75W	Tweeter Size:	60mm/2.36"
Maximum Power:	150W	Midrange Size:	92mm/3.62"
Sensitivity:	88.769dB	Woofer Size:	209mm/8"



EX28 Chrome Tweeter

Impedance :	4ohm	Frequency Response:	1KHz~30KHz
Rated Power :	25W	Voice Coil Diaeter:	28mm/1.10"
Maximum Power:	50W	Inst.depth:	25mm/1.0"
Sensitivity:	90dB	Tweeter Size:	61mm/2.4"



EX28 Black Tweeter

Impedance :	4ohm	Frequency Response:	1KHz~30KHz
Rated Power :	25W	Voice Coil Diaeter:	28mm/1.10"
Maximum Power:	50W	Inst.depth:	25mm/1.0"
Sensitivity:	90dB	Tweeter Size:	61mm/2.4"



EX50 Chrome Technical Parameter

Impedance:	4ohm	Frequency Response:	400Hz~9KHz
Rated Power :	20W	Midrange Voice Coil Diaeter:	52mm/2.05"
Maxmum Power:	100W	Inst.depth:	27mm/1.06"
Sensitivity:	87dB		



EX50 Black Technical Parameter

Impedance:	4ohm	Frequency Response:	400Hz~9KHz
Rated Power :	20W	Midrange Voice Coil Diaeter:	52mm/2.05"
Maxmum Power:	100W	Inst.depth:	27mm/1.06"
Sensitivity:	87dB		



EX165 Chrome Technical Parameter (grill optional)

Impedance:	4ohm	Frequency Response:	55Hz~6KHz
Rated Power :	75W	Voice Coil Diaeter:	30mm/1.18"
Maximum Power:	150W	Inst.depth:	66mm/2.6"
Sensitivity:	86dB	Woofers Size:	165mm/6.5"



EX165 Black Technical Parameter (grill optional)

Impedance:	4ohm	Frequency Response:	55Hz~6KHz
Rated Power :	75W	Voice Coil Diaeter:	30mm/1.18"
Maximum Power:	150W	Inst.depth:	66mm/2.6"
Sensitivity:	86dB	Woofers Size:	165mm/6.5"

EX6



© Sound expression: The tone is full and delicate, transparent and natural, and extremely emotional.

EX6 Chrome Technical Parameter

Impedance:	4ohm	Frequency Response:	44Hz~22KHz
Rated Power :	75W	Tweeter Voice Coil Diaeter:	28mm/1.1"
Maximum Power:	150W	Woofers Size:	165mm/6.5"
Sensitivity:	85.4dB	Inst.depth:	66mm/2.66"



© Sound expression: The tone is full and delicate, transparent and natural, and extremely emotional.

EX6 Black Technical Parameter

Impedance:	4ohm	Frequency Response:	44Hz~22KHz
Rated Power :	75W	Tweeter Voice Coil Diaeter:	28mm/1.1"
Maximum Power:	150W	Woofers Size:	165mm/6.5"
Sensitivity:	85.4dB	Inst.depth:	66mm/2.66"

EX6.3



© Sound expression: The tone is full and delicate, transparent and natural, and extremely emotional.

EX6.3 Chrome Technical Parameter

Impedance:	4ohm	Frequency Response:	44Hz~22KHz
Rated Power :	75W	Tweeter Size:	60mm/2.36"
Maximum Power:	150W	Midrange Size:	90mm/3.54"
Sensitivity:	85.4dB	Woofers Size:	165mm/6.5"



© Sound expression: The tone is full and delicate, transparent and natural, and extremely emotional.

EX6.3 Black Technical Parameter

Impedance:	4ohm	Frequency Response:	44Hz~22KHz
Rated Power :	75W	Tweeter Size:	60mm/2.36"
Maximum Power:	150W	Midrange Size:	90mm/3.54"
Sensitivity:	85.4dB	Woofers Size:	165mm/6.5"

©Sound performance: Provide sufficient current for the car audio system, filter noise, and easily handle the big dynamic.

RFX-90 Automotive capacitor

RFX-90 Technical Parameter

model:	RFX-90
Capacity:	1.0f
Working voltage:	10V-16V
E.S.R:	-----
Size(mm):	214x208x50



R-16F Automotive capacitor



©Sound performance: Provide sufficient current for the car audio system, filter noise, and easily handle the big dynamic.

R-16F Technical Parameter

model:	R-16F
Capacity:	16f
Working voltage:	12V-16V
E.S.R:	0.0015ohm@120Hz/25°C
Size(mm):	289x140x50mm

A75 II Technical Parameter

Working Mode:	AB	Bridged Power:	240W×2
Input Level:	0.9-4.5V	S/N:	>95dB
Operating Voltage:	24-28V	Fuse:	25A×2
Frequency Response:	20Hz-20KHz	Dimensions:	323×170×50 mm
Rated Power :	75W×4ch		



D800 Technical Parameter

Working Mode:	D	Bridged Power:	960W@4Ω
Input Level:	0.4-5.5V	S/N:	>92dB
Operating Voltage:	24-28V	Fuse:	25A×3
Frequency Response:	20Hz-160Hz	Dimensions:	271×170×50 mm
Rated Power :	1x300W@4Ω	1x500W@2Ω	1x800W@1Ω



ES812 Control panel (standard configuration)

ES812(8input/12output)

ES812 Bluetooth version

Operating voltage:	10-16V
Analog input signal:	8-channel RCA or high level
High level combination:	4 channels input support per
Digital input signal:	COAXIAL-1channel, OPTICAL-1channel
	192kHz/24bit sampling rate
Input level:	RCA<3.5V; High level<22V
Output signal:	12-channel RCA
Output level:	6V max
S/N:	>115dB
Frequency response:	20Hz~20kHz; ±0.2dB
Equalizer:	Each channel independent 31 segment equalizer
Equalizer control mode:	Independent adjustment per channel/absolute linkage adjustment/relative linkage adjustment

ES408 4input/8output

power supply	10~16V
Power on mode	ACC or high level input
high level input	4-channels(26Vpp)
low level input	4-channels(8.5Vpp)
Bluetooth input	Bluetooth5.0
Output channel	8-channels
Output amplitude	17Vpp
Operating temperature	-20°C~70°C
Dimensions(HxDxW)	50x145x162mm

ES408 Control panel (matching control panel)



OTG-1 Technical Parameter

Support Format:	DSD128
Sampling Rate(USB decode)	192KHz/24bit
Sampling Rate(Optical/Coaxial)	192KHz/24bit
Frequency Response:	20Hz~40KHz
S/N :	>117dB
Harmonic Distortion	<0.002%
Input	Type-C input×1/USB input×1
Output	Optical output×1/Coaxial output×1
Dimension(HxDxW) :	25x64x80mm

R6S Technical Parameter

Input:	4 channel high level input
Output:	4 high level output channel / 6 channel output low level
RCA output voltage:	4V
Power amplifier output power:	65W-80W (12V-14.4V)
Frequency response:	10Hz~22KHz
Digital signal processing bandwidth:	0-68Bit
Digital signal processing type:	Audio digital signal processing
Signal conversion:	Analog signal digital signal / Digital signal analog signals
Signal to noise ratio:	105dB
Separability:	90dB
Total harmonic distortion:	<0.01% Low-level output <0.03% High level output
Additional features:	USB output control
size:	170mm×107.6mm×46.6mm



U6.9 Active ultra-thin bass



◎Sound performance: Full low frequency, solid strength, good imaging effect, easy installation, no space

U6.9 Technical Parameter

Impedance:	4ohm	S/N :	>90dB
Operating Voltage:	10~16V	Frequency Response:	20Hz~150Hz
Rated Power :	150W	Woofer Size:	6x9"
Power:	300W	Body size:	287×207×75mm

U10V2 Active ultra-thin bass



◎Sound performance: Full low frequency, solid strength, good imaging effect, easy installation, no space

U10V2 Technical Parameter

Impedance:	4ohm	S/N :	>90dB
Operating Voltage:	10~16V	Frequency Response:	20Hz~150Hz
Rated Power :	150W	Woofer Size:	10"
Power:	400W	Body size:	345×260×68mm

WB10 Active spare wheel subwoofer



◎Sound performance: Low frequency compensation, sufficient sense of quantity, deep dive, convenient installation does not occupy space

WB10 Technical Parameter

Impedance:	4ohm	S/N :	>90dB
Rated Power :	300W	Frequency Response:	20Hz~150Hz
Maxmum Power:	600W	Body size:	360×348×147mm

WB11 Active spare wheel subwoofer



◎Sound performance: Low frequency compensation, sufficient sense of quantity, deep dive, convenient installation does not occupy space

WB11 Technical Parameter

Impedance:	4ohm	Frequency Response:	20Hz~150Hz
Rated Power :	360W	Woofer Size:	11"
Maxmum Power:	620W	Body size:	360×350×120mm
S/N :	>90dB		

WA8II Active subwoofer



◎ Sound performance: Like the rich and elegant vocal music of the cello, you can experience a touch of sadness and sadness

WA8II Technical Parameter

Impedance:	2ohm	Frequency Response:	20Hz~250Hz
Rated Power :	300W	Woofer Size:	8"
Maxmum Power:	600W	Body size:	435×285×242mm
S/N :	>85dB		

◎ Sound performance: Like the rich and elegant vocal music of the cello, you can experience a touch of sadness and sadness

RU8 Technical Parameter

Impedance:	4ohm	Woofer Size:	209mm/8.23"
Rated Power :	200W	Inst.depth:	69mm
Maximum Power:	400W	FS:	29Hz
Sensitivity:	80dB	QTS:	0.677
Frequency Response:	20Hz~750Hz	VAS:	9L

◎ Sound performance: The sound is clean and crisp,the drum density is good, the sense of volume is sufficient,and the dive is deep

M8 Technical Parameter

Impedance:	2+2ohm	Woofer Size:	210mm/8.27"
Rated Power :	250W	Inst.depth:	115mm
Maxmum Power:	500W	FS:	38Hz
Sensitivity:	86dB	QTS:	0.509
Frequency Response:	38Hz~1KHz	VAS:	8.102L

◎Sound performance: The sound has a sense of bouncing, as if it has been given life. It is the preferred subwoofer for mid-range systems.

M10 Technical Parameter

Impedance:	4+4ohm	Woofer Size:	257mm/10"
Rated Power :	200W	Inst.depth:	121mm
Maxmum Power:	400W	FS:	31Hz
Sensitivity:	86dB	QTS:	0.645
Frequency Response:	28Hz~1KHz	VAS:	16L

◎ Sound performance: The sound is clean and crisp,the drum density is good, the sense of volume is sufficient,and the dive is deep

M12 Technical Parameter

Impedance:	4+4ohm	Woofer Size:	310mm/12.2"
Rated Power :	200W	Inst.depth:	138mm
Maxmum Power:	400W	FS:	34Hz
Sensitivity:	88dB	QTS:	0.85
Frequency Response:	18Hz~1.1KHz	VAS:	67.8L

◎Sound performance: Full low frequency, solid strength, full timbre,open sound field.

WL10 Technical Parameter

Impedance:	4+4ohm	Woofer Size:	273mm/10.75"
Rated Power :	350W	Inst.depth:	134mm
Maximum Power:	700W	FS:	48Hz
Sensitivity:	86.9dB	QTS:	0.35
Frequency Response:	22Hz~1.4KHz	VAS:	10.662L

RU8 Active subwoofer



M8 Subwoofer



M10 Subwoofer



M12 Subwoofer



WL10 Subwoofer



WL12 Subwoofer



◎Sound performance: Full low frequency, solid strength, full timbre, open sound field.

WL12 Technical Parameter

Impedance:	4+4ohm	Woofer Size:	313mm/12.32"
Rated Power :	350W	Inst.depth:	145mm
Maxmum Power:	700W	FS:	47Hz
Sensitivity:	88.2dB	QTS:	0.412
Frequency Response:	18Hz~1.1KHz	VAS:	19.246L

Specially designed for top tier speakers



It is so grand and elegant
Perfect and flawless like a work of art

